

# UNI CARRIERS<sup>®</sup>

## □ FORKLIFT □



**Electric Walkie Pallet Truck**

**24 Volt AC-Powered**  
**4,500 lbs. Capacity**

**W/LX Series**

# WLX Series Applications

Assembled in Marengo, IL and designed from the ground up based on end-user input, the WLX Series brings together demanding performance standards with low cost of ownership. The result is a pallet truck that's highly efficient, highly productive and delivers UniCarriers legendary reliability. All of which makes the WLX the best choice for a wide range of applications, including:

- Distribution
- Bottling Operations
- Retail Stores
- Grocery Stores / Wholesalers
- General Warehousing
- Manufacturing



Look for these symbols for features available only on UniCarriers forklifts or that provide a proven performance advantage as compared to competitive trucks.



# NEVER QUIT.

It defines our forklifts and the company that builds them.

Over the course of a century, the company known as UniCarriers took shape. As we grew and evolved into a US manufacturer with a global reach in nearly 100 countries worldwide, much has changed, but one thing hasn't: our mission. UniCarriers is committed to providing you with the ultimate in reliability, performance, and value.

And that commitment can be seen in the WLX Series. Designed to maneuver in and out of tight spaces... manufactured to deliver more productivity on every shift...built to last...and equipped with ergonomic features that optimize operator comfort, visibility and efficiency — the WLX Series combines amazing efficiency with the superior reliability you get from forklifts built by UniCarriers.



## Maximum Maneuverability

The WLX Series provides the agility and response required to get you into and out of tight spots



## Power & Performance

Our heavy-duty 1.5kW AC drive and hydraulic motors deliver plenty of reliable power



## Up Your UpTime

Discover reliability features that cut downtime and keep your business up and running



## Comfort Zone

Your operators and your entire operation will benefit from our comfort & productivity features



## Sweet Savings

Designed to deliver a low cost of ownership year after year after year



## Make It Yours

Already well appointed, the WLX can be customized to meet your specific needs



To learn more, and a find a dealer near you, visit [UniCarriersAmericas.com](http://UniCarriersAmericas.com)





# Maximum Maneuverability

In and out of trailers, up and down tight aisles, over dock plates and ramp angles, every aspect of the WLX was designed to provide maximum performance in minimal space. No other walkie offers such a tight turning radius, a higher lift height — or the capability to maneuver so quickly, confidently, effortlessly and productively in tight spaces.



## Amazing Agility



UniCarriers incorporated user preferences into the WLX to deliver faster, easier pinwheel turning and right angle stacking within the confines of 96" wide trailers.\*

\*WLX45S Model with 48" nominal length forks

## Room To Maneuver

An industry leading 59.4" turning radius with 48" nominal length forks\*.





### Easy Does It

Tiller-up drive switch engages creep speed for precise load positioning and pinwheel turning with the handle in a vertical position.



### Reaching New Heights

An industry-leading 5.9" lift height provides plenty of clearance over dock plates, ramp angles and uneven floors.



### Better By Design

The ergonomically designed tiller arm & control handle provide high-precision control with low steer effort and reduced operator fatigue.



### Visibly Better

Designed with a smaller head length than competitive models, the contoured and compact design will improve maneuverability & provide better fork tip visibility.



### Easy In, Easy Out

Contoured, tapered fork tips and slides are designed for fast, easy pallet entry & exit — even on unloaded pallets.



### Precise Operation

Three contact points for forward/reverse rotary travel direction and speed control improve maneuverability and provide precise handling.





# Power & Performance

The WLX sets the standard of performance with our high-output, high-efficiency and highly reliable drive and hydraulic motors. It delivers more productivity thanks to enhanced, industry-leading specifications, and provides the extraordinary strength and reliability that are built into every UniCarriers forklift.

## The Drive To Succeed

Amazing reliability and energy efficiency are the hallmarks of our heavy-duty, high-output 1.5kW AC drive motor. It's vertically mounted to eliminate cable flexing — and delivers high starting torque and plenty of power.

## More Power To You

24-volt electrical system delivers efficient power for maximum work performance and run time — providing longer work cycles, reducing down-time and delivering more productivity.



## Pick Up The Pace



With variable walking travel speeds, you'll get more work cycles — and greater productivity — out of every shift.



### Lifts High And Fast

The WLX features an exceptional 2.36"/second lift speed and an industry leading 5.9" lift height that can only be achieved by a heavy-duty hydraulic motor, integral pump and high capacity reservoir.



### Smooth Rounded Entry Slides

Convex shaped and smoothly rounded for easy pallet entry.



### Solid Steel Pushrods

The maintenance-free push rods on the WLX eliminate the adjustment required by pull-rod designs — and are protected against possible damage.



### Sealed For Your Protection

An IP65 rated controller combined with sealed harness connectors and logic boards provide dependable, efficient operation in wet, cold environments down to -4°F (-20° C).



### High/Low Travel Speed Control

Rabbit/Turtle speed switch allows the operator to select the appropriate speed for the operating environment — and may be adjusted by a service technician to meet the needs of any application.

### Strong & Stable Performance

Wide mounted, reversible/replaceable wear blocks (skid bars) provide added stability — and prevent damage to the truck, pallets and products you're moving.

### Improved Load Stability

The heavy-duty, solid, one-piece lower torque tube and trapezoidal lift system are designed for even distribution of lift forces. The result is improved load stability and easier handling even when working with off-center loads.



# Up Your UpTime

The WLX is built with a central cast iron frame with an integral lift cylinder for a lifetime of operation. It's designed for faster, easier servicing to minimize scheduled downtime. And with optional battery packs that deliver more power — and features that use less — it delivers longer run times and greater productivity on every charge.



### Enduring Strength

The WLX features a robust, cast iron central frame with an integral lift cylinder — it's a design that provides strong support for the motors and lift systems and exceptional durability for long service life.





**Maintenance-Free Performance**

The gearbox is maintenance free with gears permanently lubricated in a sealed unit to minimize service and extend life.

The fork assembly features:

- Heavy-duty steel push rods — built to last, shielded from potential damage and never need adjustment
- Sealed, self-lubricating, filament-wound fiber bushings that are totally maintenance free

**A Material Difference**

The lift cylinder is chrome plated, providing superior resistance to both wear and corrosion.



**Made To Handle Tough Punishment**

The control handle is made from a tough, durable composite plastic and reinforced with fiberglass to protect against dirt and moisture, minimize component wear and extend service life.

**We've Eliminated Parts... And Service Requirements**

Non-contact Hall Effect sensors mean there are no mechanical switches or potentiometers to service or wear out. Scheduled maintenance requirements have been reduced to lower cost of ownership.



**Reinforced Steel Protection**

The thick, reinforced stamped steel bumper is 9 1/2" tall to provide extra protection for the truck and cover. Its bolt-on design allows for easy replacement if damaged.

**Reliability Unharnessed**

The Controller Area Network (CAN-Bus) system on the WLX uses just four wires for communications between the control handle and the truck's controller. With fewer wires and connectors than the wire harnesses used by some competitors, it offers superior performance and greater reliability ... with fewer parts to wear, service and replace.





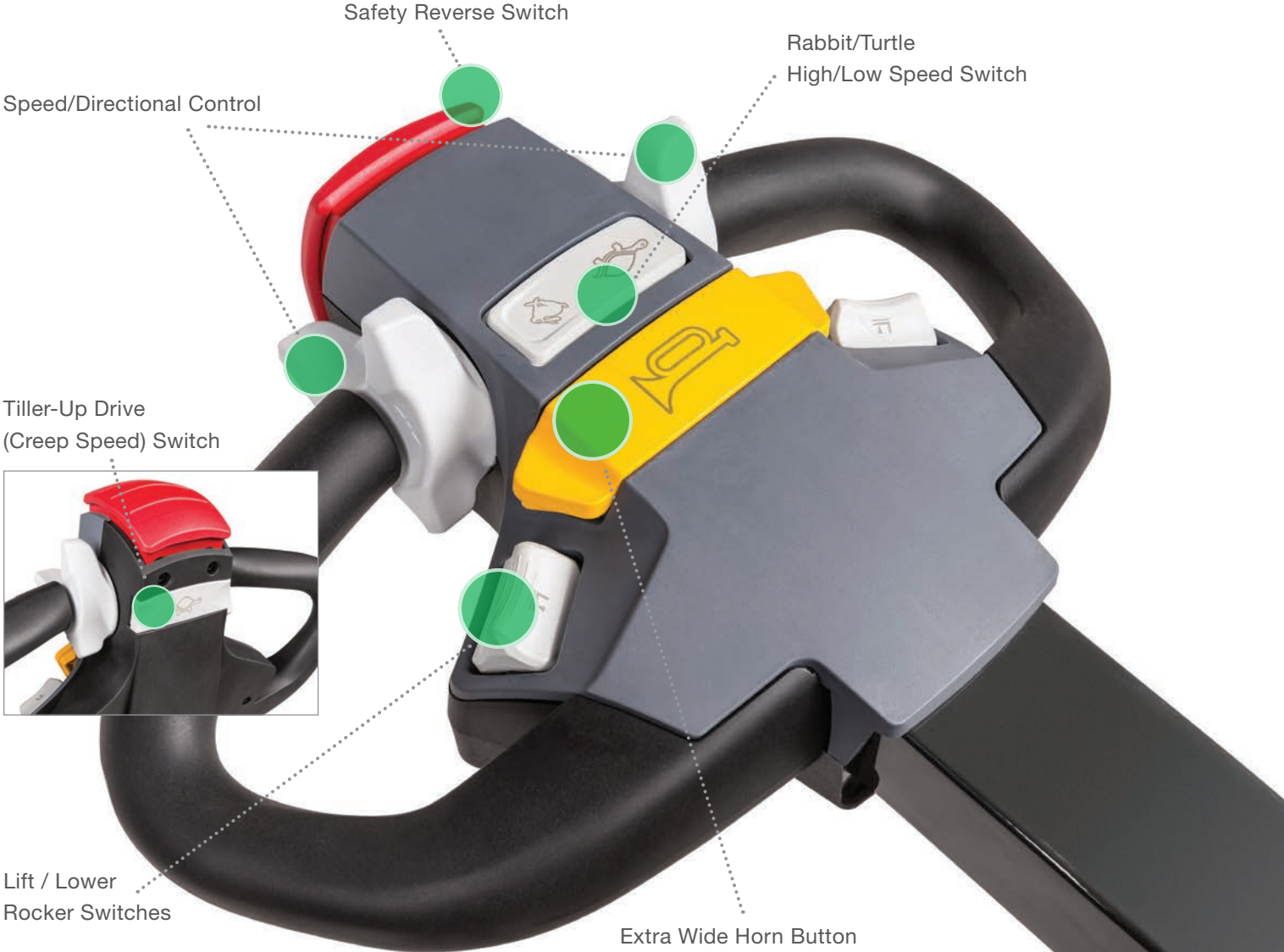
# Comfort Zone

From the individual features to the overall design, we've incorporated state-of-the-art ergonomics throughout this advanced machine. As a result, your operators will be more comfortable, confident and productive.

## Complete Control

Check out the control handle on the WLX and you'll see that it's ergonomically designed for quick, easy and intuitive fingertip or thumb activation of all functions. The lift/lower rocker switches, 3-point speed/directional controls and horn button can all be accessed with equal

ease by both right-handed and left-handed employees. The High/Low (Rabbit/Turtle) travel speed switch is centrally located, and the large safety reverse switch has been smoothly contoured to reduce the chance of snagging.



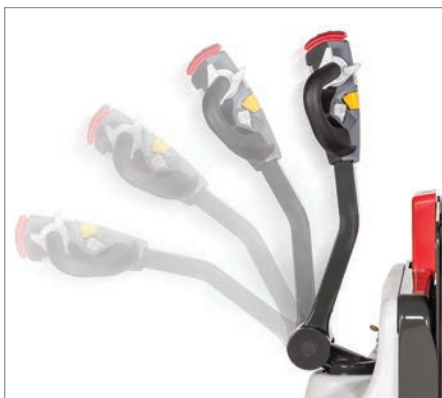


### One Size Fits All

The tiller arm is ergonomically designed to optimize operator comfort, reduce fatigue — and perfectly fit operators from the 5th through 95th percentile range in height.

### The Brake Is Automatically Engaged When The Truck Isn't

The automatic parking brake engages whenever the truck is stationary and no throttle command is given — the brake is magnetically released quickly and easily when it's time to move.



### Responsive, Low Effort Braking

Upper and lower braking zones provide quick, easy stopping with minimal effort. And with a low tiller arm spring force, returning to the operating range is just as easy.

### Valuable Hands-On Experience

The handle is designed to provide a secure grip while operating for increased productivity and control, and the grips have been angled to a natural wrist position for increased operator comfort throughout the longest shifts.

### Works On Contact

The large safety reverse switch activates from multiple angles, automatically reversing truck travel if contact is made.





# Sweet Savings

Not only does the WLX deliver higher output, it's also designed to require less inputs to reduce the time and expense associated with maintenance. That's achieved using maintenance-free, non-wear parts...eliminating parts wherever possible...extending service intervals...and making parts and components easily accessible when service is required. Better design on the front end helps you save money on the back end.



Check out just a few of the ways the WLX was built to provide your operation with the ultimate in economy. From the design to the features to the materials we use, you'll find the WLX is engineered from the ground up to save you time, energy and money.

Sealed harness connectors provide protection against corrosion.

The filament-wound pivot bushings on the lift linkage are completely maintenance-free.

Diagnostic port is located on the outside of truck for ease of access — a service technician can quickly plug in a laptop to access fault codes and operational data.

The AC drive motor has no brushes to service or replace.

A durable, scratch-resistant powder coat finish protects the frame and keeps your operation looking good.

Our CAN-Bus System has



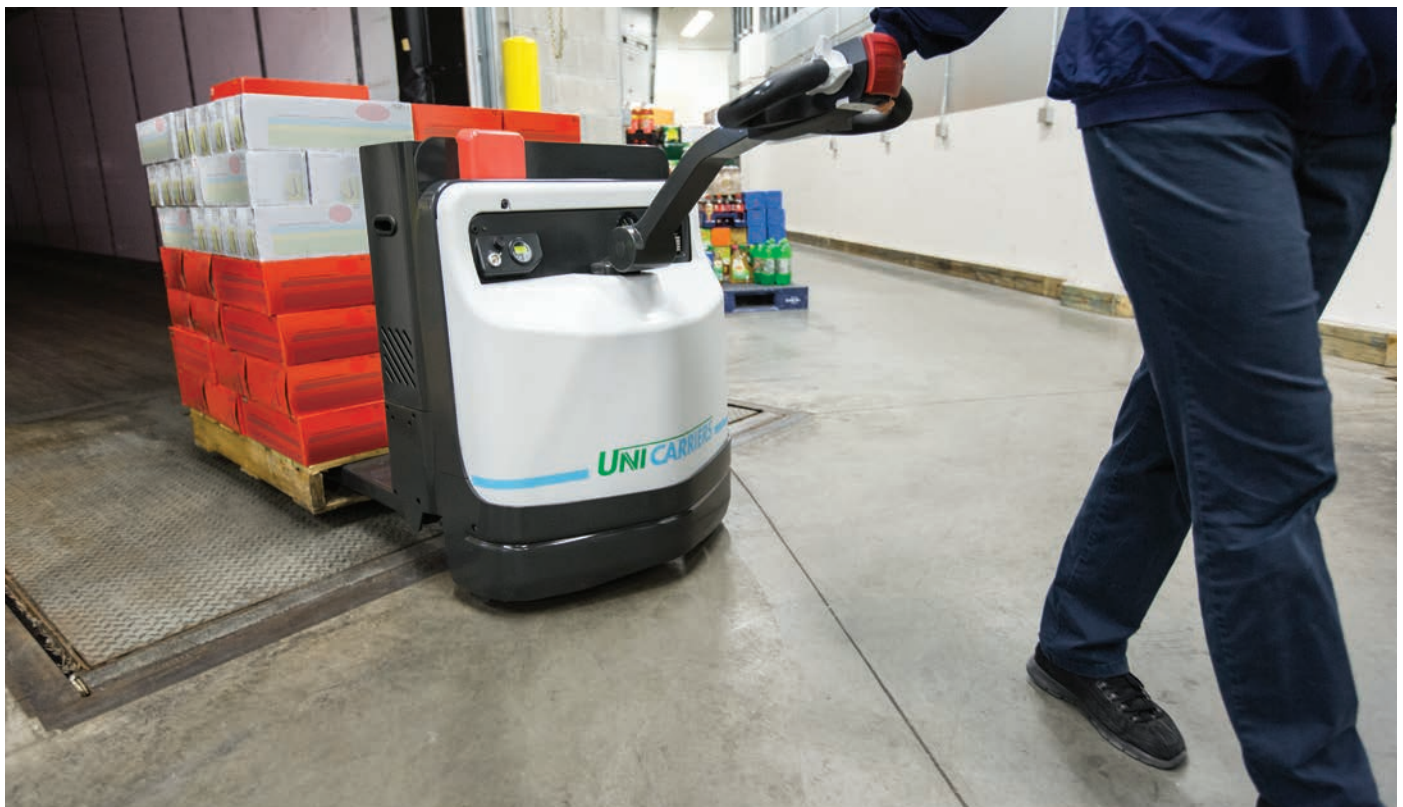
fewer wires and connectors. Our electronic horn is dependable, maintenance-free and corrosion-resistant.

Proven push rod linkage design never needs adjustment — and ensures that rods never project under the fork plane to shield lift rods and linkages from damage.



Rugged polycarbonate hood and covers won't bend or dent — and the hood is easily removed for quick access to the drive unit and major components.

The use of non-contact Hall Effect sensors eliminate mechanical switches and potentiometers — which are potential wear items.







# Make It Your Own

The WLX comes standard with the most popular and essential features. To fit the needs of different applications, environments and operations, we also offer a variety of options to enhance performance, efficiency and profitability.

The WLX is available with a choice of battery configurations:

A 7.8" compartment for:

An optional wet cell battery pack, equipped with a swing-out upper tray and spring loaded battery latch design for easy access and quick maintenance

An optional maintenance-free battery pack with fixed trays

A 9.1" compartment for use with a maintenance-free industrial battery







**Charger Unit**

Sealed built-in battery charger option simplifies on-board battery charging.



**Drive/Tow Switch**

Electronically releases the parking brake to allow a disabled truck to be moved to a charging station or service area.



**Fork Assembly**

To meet the specific needs of your operation, we offer:  
 Fork width options: 18", 20", 22", 25", 27"  
 Fork length options: 36", 42", 48", 54", 60"



**Optional Bolt-On Load Backrest**

Available in 48", 60", 72" sizes for increased load stability.



**Optional Casters**

Castors provide five points of ground contact for exceptional stability over uneven floors and docks. Plus, they are easily maintained.



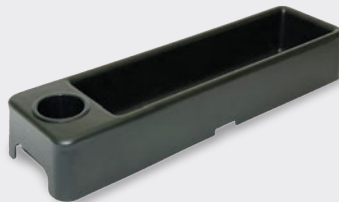
**U.L. Type EE Rating**

Fire safety rated truck for applications requiring Type EE trucks, in accordance with NFPA 505 "Fire Safety Standards for Powered Industrial Trucks"



**Selection of Drive Tires**

Choose from a variety of options to support your applications.



**Optional Storage Tray**

Battery-mounted for easy access.



**Travel Alarm**

Audible alarm may be preprogrammed for operations with: forks forward, forks trailing, or both.

# Reliability.

It's the defining trait of our company and our forklifts.



UniCarriers' roots extend back over 100 years, and over that time, strong, reliable performance has always been the hallmark of our organization, our people and our equipment.

Today, our unrivaled reliability continues to provide UniCarriers' customers with a competitive edge. And together, we move the merchandise that moves world commerce with greater efficiency, economy and reliability.

When it comes to providing forklifts that make a difference for our customers and theirs...

## We Never Quit.

**UNICARRIERS**<sup>®</sup>  
**FORKLIFT**  
UniCarriersAmericas.com



SB-WLX 10-2016 Printed in U.S.A.

UniCarriers® is a registered trademark of UniCarriers Corporation. UniCarriers Americas Corporation reserves the right to make product changes relating to colors, equipment, specifications or available options without notice. For more information, contact your UniCarriers representative.